

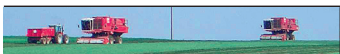
# MARKETS

## ...at a glance

Week ending 25 May 2012



<b>Livestock</b>	This week	Last week	One year ago
<b>CATTLE</b>			
Finished steers R4L p/kg/dw (GB)	342.7	344.8	308.5
All finished steers p/kg/lw (GB)	186.4	184.9	160.8
Finished heifers p/kg/lw (GB)	190.1	188.8	166.4
Young bulls p/kg/lw (GB)	176.9	176.1	157.2
Continental x bull calves £/head (E&W)	281.9	271.5	234.5
Friesian x bull calves £/head (E&W)	84.3	89.5	45.2
Dairy cows £/head (E&W)	1476	1268	965
<b>SHEEP</b>			
Finished lambs DW (Old season) p/kg (GB)	422.1	426.0	555.5**
Finished lambs SQQ (Old season) p/kg (GB)	207.6	182.9*	254.6
<b>PIGS</b>			
Cull sows p/kg lw (GB)	76.3	76.9	60.4
DAPP p/kg/dw GB average	149.0	148.4	148.4



<b>Arable</b> £/t	This week	Last week	One year ago
<b>CEREALS</b>			
Feed wheat	167.1	166.3	188.4
Milling wheat	171.3	171.0	203.0
Feed barley	162.1	162.1	171.4
Oilseed Rape	360.5	355.2	400.6
<b>PULSES</b>			
Feed peas	212.6	208.6	204.3
Feed beans	214.6	210.6	208.0

\*Old season \*\*New season



## Inputs Price Monitor

[www.fwi.co.uk/nfu-ipm](http://www.fwi.co.uk/nfu-ipm)

Product (April)	Price
RED DIESEL p/litre (average)	69.26
RED DIESEL p/litre (high)	70.83
RED DIESEL p/litre (low)	67
WHITE DIESEL p/litre	n/a
KEROSENE p/litre	n/a
EU/UK AM. NITRATE £/t	n/a
IMPORTED AM. NITRATE £/t	n/a
GRANULAR UREA £/t	n/a

\* These figures are from the NFU/Farmers Weekly Inputs Price Monitor, derived from farmers who take part in our monthly on-line survey. If you would like to take part, log on to

[www.fwi.co.uk/nfu-ipm](http://www.fwi.co.uk/nfu-ipm)

\* For full results see [www.nfuonline.com](http://www.nfuonline.com)